

JUMP START YOUR SPRING!

NEW LOW RATES ON BENNETT HOMES!



RATES AS LOW AS

3.25%*

AT 3.3389% APR

AVAILABLE AT WOODDALE IN FAIRWOOD!

Contact Us:

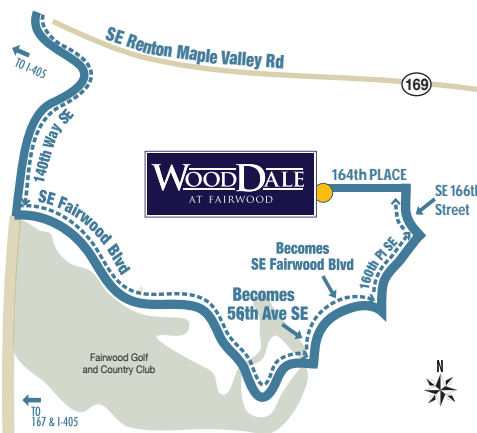
WoodDale in Fairwood
from the S300's

Jessica Lum 425.785.1606
Paula Chambers 206.234.1538

Monday and Tuesday: 1pm - 4:30pm
Saturday and Sunday: 12pm - 4:30pm

Information Center Temporarily Located in
WoodGrove on Lot 22

Directions From I-405:



- Head East Bound on HWY 169 SOUTH
- RIGHT on 140th Way SE
- Turn LEFT at SE Fairwood Blvd
- Turn LEFT at 156th Ave SE
- Turn LEFT at 160th Pl SE
- Turn LEFT at SE 164th Place
- Continue straight to WoodDale

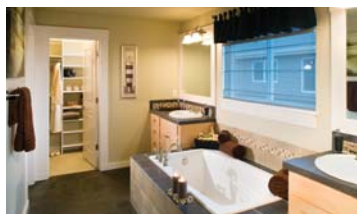
Also Available

90% Conventional Loans
(some restrictions apply)

OR

96.5% FHA Loans
(some restrictions apply)

Contact Us for Information
on All Financing Programs!



BENNETT
Homes

www.BennettHomes.com

*Special Builder Financing: APR 3.3389. Rate quoted is based on a 7/1 ARM with a builder paid buydown. The rate is fixed for the first 7 years. Years 8-30 are subject to ARM parameters and will likely increase. Loans are subject to credit approval and not all borrowers will qualify. Rates are subject to change without notice. Offer cannot be combined with other offers. Based on a maximum loan amount of \$417,000. 10% Minimum Down Payment required. Certain restrictions may apply including minimum credit scores and rate lock periods. Buyers are responsible for normal closing costs including a 1% origination fee. Offer only valid when using Rainier Mortgage preferred lender. On presales only, rates can not be locked until lumber drop. Offer available for a limited time and may not be combined with other offers. Seller Paid promotion based on accepted purchase price. Prices guaranteed and offer must be written by March 31, 2010. Contact Jay Solverson, Rainier Mortgage LLC, (206)264-5063.