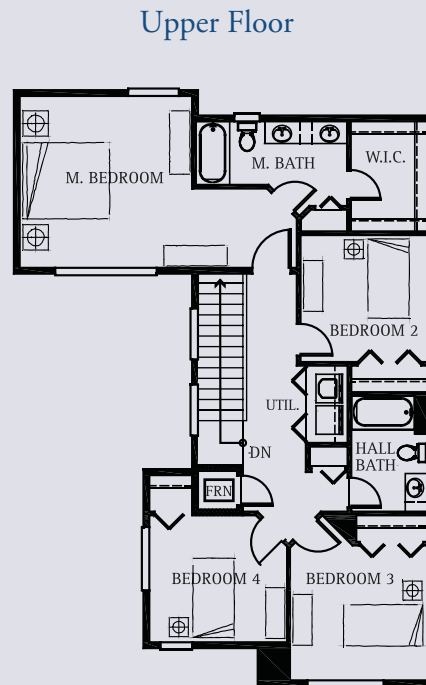
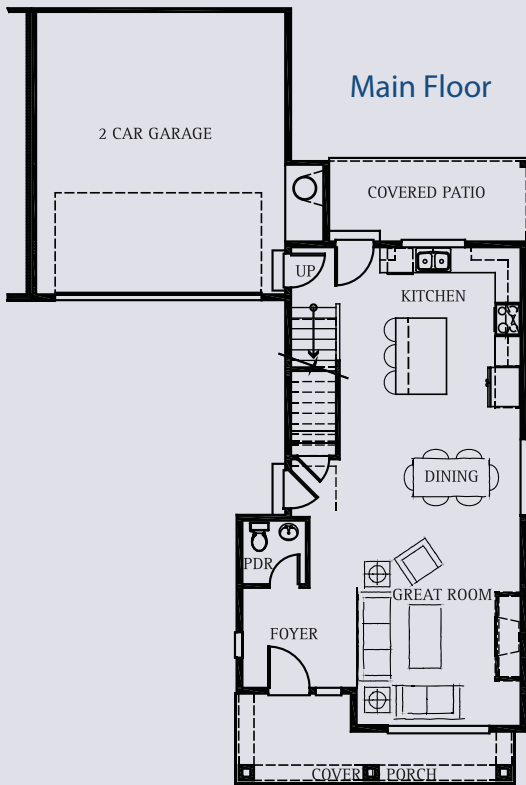




Poplar

1873 Square Feet

4 Bedrooms
2.5 Bathrooms
2 Garage



- ✓ 4 bedrooms
- ✓ 2.5 bathrooms
- ✓ Great room
- ✓ Private master suite
- ✓ Covered front porch
- ✓ Covered rear patio
- ✓ 2 car garage

STANDARD LUXURY INCLUSIONS

- ✓ Granite slab in kitchen and master bath
- ✓ 4 piece master bath featuring "vessel style" vanity bowls
- ✓ 4 piece stainless steel kitchen including 30" gas range, extra large capacity oven, under cabinet range hood, dishwasher and built-in microwave
- ✓ Front and rear landscaping
- ✓ Attractive timber-look flooring on main floor
- ✓ Fireplace with mantle
- ✓ Designer lighting

For further information please contact Brian Eng at 425-443-9062

Bennett Homes reserves the right to modify plans, designs, materials and specifications without prior notice. Photos used in this piece do not necessarily represent final product. Please consult our sales representative for clarifications and additional information.



www.BennettHomes.com